

# HIT THE GROUND RUNNING

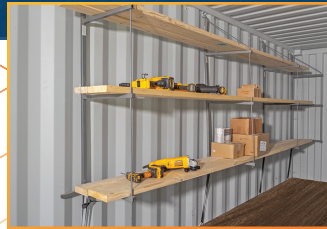
OUR ACCESSORIES AND ADD-ONS MAKE YOUR MODULAR WORKSPACE OR PORTABLE COMBO UNIT TURNKEY READY FOR BUSINESS!

Select from the following:



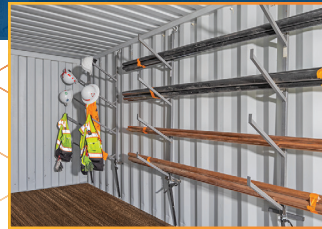
**High-Security Puck Lock**

Keyed-alike sets available so you can use a single key.



**Shelving Brackets**

Available with three (3) 1,100 lb-rated support arms.  
Note: shelf material supplied by the customer.



**Pipe Racks**

Four solid-steel support arms hold a variety of sizes of pipes.



**Folding Tables & Chairs**

Eliminates the need to order furniture separately.



**Plan Tables**

Perfect for a full set of plans. Ideal for construction superintendents, foremen, and architects.



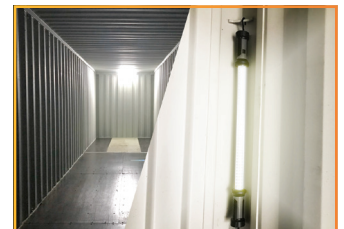
**Dry Erase Boards/ Cork Boards**

Keep employees informed to increase jobsite productivity.



**Exterior Security Solar Light**

Energy-efficient solar lights, 300% brighter, magnetic mounting, motion-activated, adjustable heads, durable, long-lasting.



**Interior Rechargeable Light**

Versatile rechargeable light: 3 brightness levels, 82 ft beam, magnetic/hook mount, adjustable handles/hooks.

## RENT, LEASE, OR PURCHASE NOW

Contact Mobile Modular Portable Storage today. Our customer service team is ready to help you select your upwardly-mobile storage solution.

[mobilemodularcontainers.com](http://mobilemodularcontainers.com) | 866.459.7600