



CASE STUDY:

Omni Mechanical

PROJECT PARTNERS: Omni Mechanical

BUILDING USE: 4-24' Storage, 4-40' Double-Door Storage, 20' Office Container

The Challenge

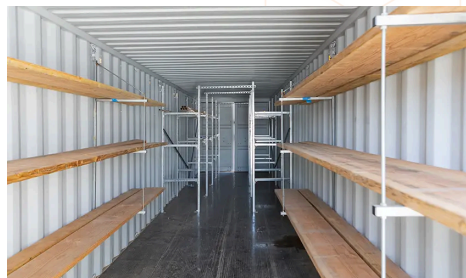
During the construction of the new Costco location, Omni Mechanical needed secure on-site storage for tools and materials while also requiring a temporary office space for project management. With limited indoor space in the early stages of construction, Omni Mechanical needed a solution that would provide easy access to tools, materials, and workspace while protecting valuable assets and facilitating efficient operations.

The Solution

Mobile Modular Portable Storage provided a comprehensive solution with multiple shipping containers and a 20' office container to meet Omni Mechanical's needs.

- Number of containers: 8 storage units (4- 24' units, 4- 40' double-door units) and 1- 20' office container.
- Duration of rental: 6 months, with the option to extend.

The shipping containers were delivered promptly and placed at strategic locations on-site, ensuring easy access to tools and materials. The 20' office container provided a comfortable, on-site workspace for project management, allowing the team to remain on-site throughout the project without needing to commute to an off-site office.



RENT, LEASE, OR PURCHASE NOW

Contact your local sales rep to learn more about the accessories that are available in your area!

mobilemodularcontainers.com | 866.459.7600

